

Comments:

Options: \*

- Free ride out using detection loop  
Detection loop installed by:  
 Contractor
- Web Based Access
- Handheld transmitters
  - 1 Channel , amount:.....
  - 2 Channel , amount:.....
- Fire alarm (NC):
  - Gate open
  - Gate closed
- Hand/Auto switch
- Half open position
  - Acoustisch & optical signal
- Timer function
- Flashing traffic light during gate movement
- Trafficlight off in closed position

Reports: \*\*

- Report "Open"
- Report "Closed"
- Report "System failure"
- Else.....

\* Depending on the number of options an extension board is required  
\*\* These options require a extension board

Options

LED Trafficlight(s) (1)

- None
- Left column      Type?: Surface mounted/Build in
- Right column     Type?: Surface mounted/Build in

Photocell pole (2&3) Required for safety when mate H < 500mm

- None
- Left (2)            Foundation?: Yes/No
- Right (3)          Foundation?: Yes/No

Safety loop (4-7)

- None
- Rectangular loop (4) Subsoil? : Concrete/Soil
- Trapezium loop (5) Subsoil? : Concrete/Soil
- Rectangular loop (6) Subsoil? : Concrete/Soil
- Trapezium loop (7) Subsoil? : Concrete/Soil

3rd Photocel (for trucks) (8)

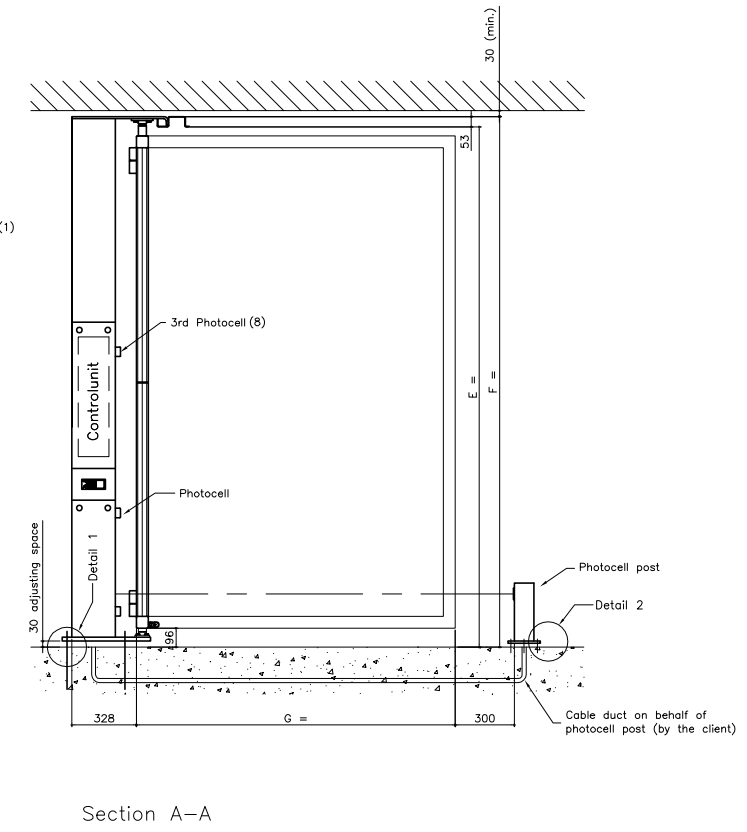
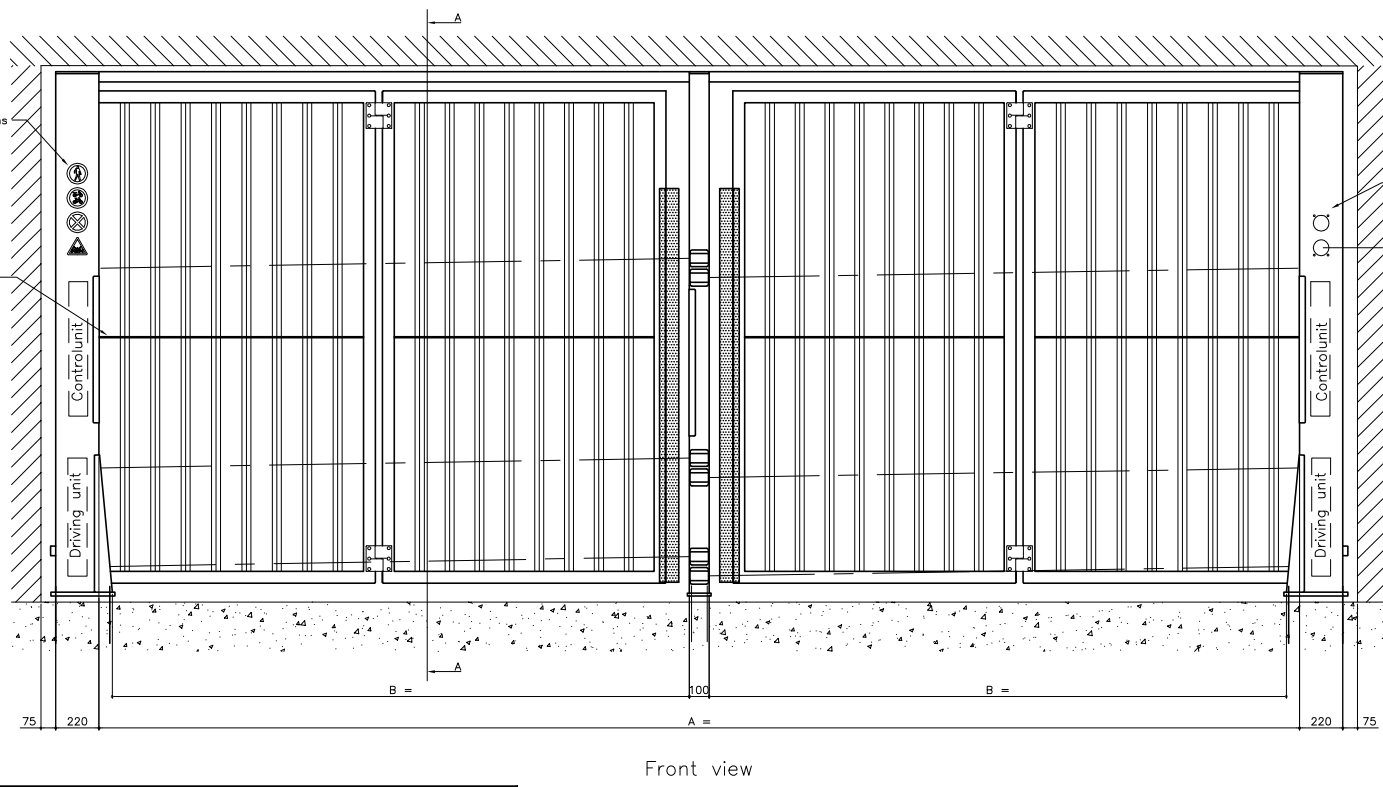
- Yes
- No

Other

-----

-----

-----



Trafficlight pole

- Yes      Foundation?: Yes/No
- No        Foundation?: Yes/No

Conservation

- Hot dip galvanized
- RAL \_\_\_\_\_
- 2 layers (Standard) (120 mu)
- 3 layers (180 mu)
- Other \_\_\_\_\_

Infill

- Bar 35x35 (45°)
- Other \_\_\_\_\_

Dimensions (mm)	
A (Width between the columns, mirror height)	4000/6000
B (Minimal width clearance) = A/2-117	
C (Maximum width clearance) = A/2-59	
D (Total width) = A+440	
E (Clearance height) 2000/4000	
F (Total height) = E+53	
G (Panel width) = A/4+95	

Comments:

- Only main components are in the drawing
- Cable ducting needs to be applied by client according to cable plan

Anchors Xentry 2 TP

- Anchorload: ...
- Anchor and drilling depth(L):M... L=.....mm

TECHNICAL CHANGES TO PRODUCT RESERVED

HTC parking & security B.V.  
PO Box 27, 2750 AA Moerkapelle The Netherlands  
T: +31(0)88 027 7088  
I: www.htc-ps.com  
E: info@htc-ps.com

Client: .....

Project: .....

Part: Xentry 2-TP

Location information:

.....

.....

.....

Rev	Date:	By	Chkd
0			
A			
B			
C			
D			
E			
F			
G			

Dwg. nr.: S01

Scale: .....

By: .....

Ordernr.: .....

FOR APPROVAL

APPROVED

YES NO

SIGNATURE: .....

DATE: .....

THIS DRAWING IS OWNED BY HTC PARKING & SECURITY B.V. AND MAY NOT BE REPRODUCED, COPIED IN WHOLE OR IN PART, OR GIVEN TO THIRD PARTIES FOR INSPECTION WITHOUT EXPRESS WRITTEN PERMISSION OF HTC PARKING & SECURITY B.V.