

## REVOLVING MA series

**Style and design for Revolving MAs.** Particularly suitable for stylish sites, Revolving MAs grant a high throughput and limit heating & conditioning losses, and, thanks to the collapsible turnstile wings they do also provide an emergency escape route.

**A smart solution for hotels entrances, airports and shopping malls,** Revolving MAs are perfect also for building and industries **controlled access** while integrating proxi badge or other readers.

They are delivered in separate parts to be assembled on the final site on the existing floor.

Revolving MAs are available with the following dimensions:

- **REVOLVING MA 1600:** Ø 1600mm and 3 wings turnstile
- **REVOLVING MA 1800:** Ø 1800mm and 3 wings turnstile
- **REVOLVING MA 2300 :** Ø 2300 mm and four wings turnstile



REVOLVING MA 1800

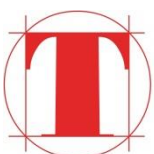


REVOLVING MA 2300

With two doors closing during night hours

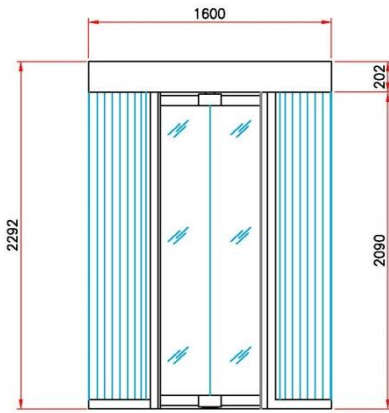
### FEATURES AND OPTIONS

- **OnlyOne Pro single presence checking system** on each turnstile sector
- digital display, menu-guided command and setting console
- intercom, voice messages and traffic-lights
- easy-link to third party manufactured access control systems (RS232 - RS485 – IBIS interfaces)
- proxy and swipe-card and biometric readers easily added
- automatic unlock system in case of emergency
- **collapsible turnstile wings**
- double sliding door to close entrance in off-hour
- rain cover

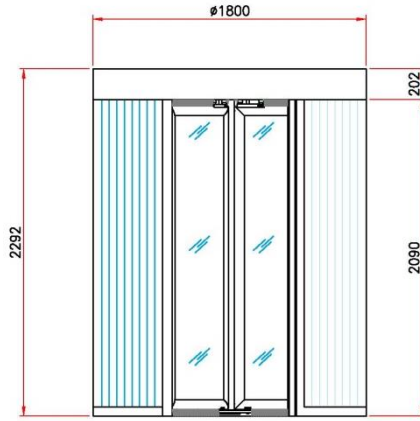


**TONALI**

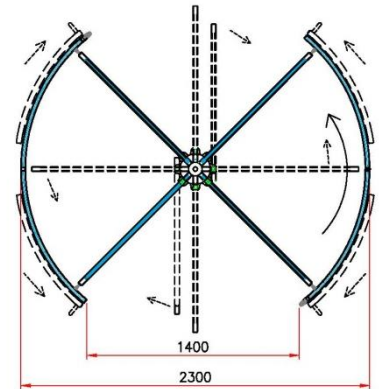
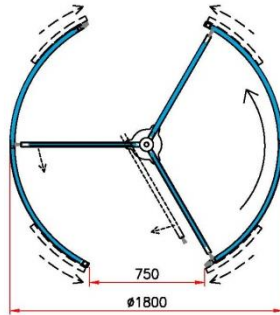
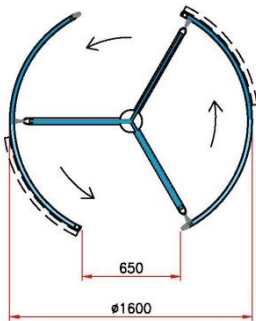
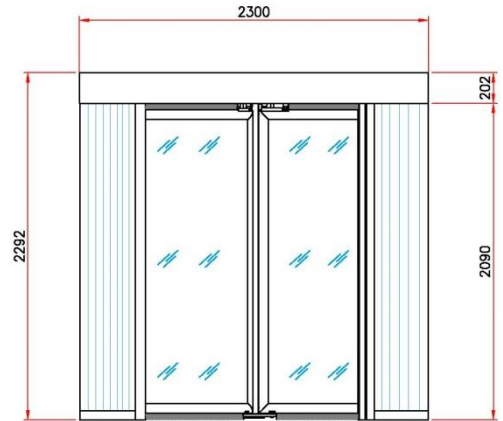
REVOLVING MA 1600



REVOLVING MA 1800



REVOLVING MA 2300



## TECHNICAL SPECIFICATIONS

- **DIMENSIONS:**
  - REVOLVING MA 1600: Ø 1600 x H 2292 mm
  - REVOLVING MA 1800: Ø 1800 x H 2292 mm
  - REVOLVING MA 2300: Ø 2300 x H 2292 mm
- **FREE PASSAGE AREA:**
  - REVOLVING MA 1600: L 650 x H 2090 mm
  - REVOLVING MA 1800: L 750 x H 2090 mm
  - REVOLVING MA 2300: L 1400 x H 2090 mm
- **WEIGHT:** roughly from 750 Kg up to 1200 Kg according to the models and additional options
- **POWER SUPPLY:** 230 V (110 V on request), 50/60 Hz
- **VOLTAGE:** 12-24 V.d.c. with back-up batteries for uninterrupted operations in case of power loss (up to 100 cycles)
- **CONSUMPTION:** Revolving MA 1600 and Revolving MA 1800: 100W; Revolving MA 2300: 150W
- **THROUGHPUT:** 14-20 full cycles/1' one sense; 29-40 full cycles/1' two senses according to the model and additional options
- **FRAME:**
  - painted steel available only in separate parts for local assembling
  - no floor (installation directly on the existing floor)
- **PAINTING AND FINISHING :** RAL colours code range standards with «orange skin» finishing (flat finishing, stainless steel execution and other colours on request)
- **GLASS:** turnstile wings and sides in 11/12mm laminated thick glass rated P2A (different glass thickness on request)
- **MOVEMENT:** 24 V.d.c. electric-motor assisted turnstile wings movement with irreversible option to lock rotation in case of total power loss
- **LIGHTING:** inside lighting with 12 V, 50/60 Hz led spots
- **ELECTRONICS:** microprocessor based electronics
- **ACCIDENT PREVENTION MEASURES:** self-adjusted braking, speed control and accident prevention devices
- **PROGRAMMABLE OPTIONS:** emergency escape/door locks; automatic/manual transit; passage one/both directions



**TONALI** | [www.tonali.it](http://www.tonali.it)

Talith Srl

Via S. Caterina da Siena 25  
20010 Arluno (MI), Italia

Tel +39 02 25551620 | Fax +39 02 25551699